

Tawhai School

Week 5 2025



Kia ora e te whānau

Today and tomorrow, we are hosting our learning conversations. We appreciate you taking the time to meet with your child's teacher. If the available times didn't suit you, please reach out to your child's teacher to arrange an alternative time that works for you.

It is important to us that we connect with all our whānau and work in partnership to support your child's learning. Your involvement makes a real difference, and we look forward to these valuable conversations.

At the end of your meeting you will be given a coloured counter which we would like you to pop into the box that best reflects your experience i.e. green = informative meeting, red = not really helpful. The box will be placed by the office.

Attendance

One of the things we are continuing to focus on in 2025 is student attendance. You will hear us talking about this with you, and your children, and it remains a strong subject of conversation.

If a child misses one day of school every two weeks, they miss more than a whole year of school by 16 years of age. As a parent or caregiver, you, alongside our school, play a key role in building strong habits of regular school attendance.

All children are legally required to attend school every day and it is a shared responsibility to make sure children attend and engage in learning from when they first start school.

You must let the school know if your child is going to be absent or intends to be absent for a portion of the school term for whatever reason, like a tangi or medical procedure. Family holidays or taking time off for extracurricular activities (not organised by school) are not acceptable reasons for being absent.

Knowing if your child is well enough to go to school can be tricky. For health guidance to support you to decide if your child is well enough to go to school refer to [Knowing if your child is well enough to go to school](#). If you are still unsure, get in touch with us and let's work together to support your learner.

If you are finding it hard to get your child to school, please talk with us so we can work together. Our school is committed to supporting your child to attend school.

Our school continues to build a culture that fosters attendance every day by having:

- School staff who have strong relationships with students and family.
- A school culture that recognises your child and your family for who you are, where you come from and what you value.
- A school whānau that takes all practical steps to make sure your child is at school and progressing in their learning.
- A school that is safe and welcoming for everyone in our school community.

If you have any attendance queries and issues, please contact us so we can work together.

Below is the STAR initiative from the MOE for your information.

PTSG

The PTSG is holding its annual AGM on Thursday 13 March at 6.30pm in the staff room where the Chairperson, Treasurer & Secretary positions are confirmed for the year. All are welcome and if you're keen to join the committee we would love to see you. Email ptsg@tawhai.school.nz for more details or just turn up on the day. This year will be a lighter year for the PTSG on fundraising due to it being a camp fundraising year. However we will still continue with our standard fundraising and there will be a few other fundraisers as well, more to come as we have details confirmed.

For Term 1 our fundraisers will be;

- Pizza Lunch - Wednesday 12 March
- Gate Combo - Friday 11 April

Upcoming dates

- Monday 3 March - **Movin' March** begins (more details to come)
- Monday 3 March and Tuesday 4 March - Parent conversations.
- Sunday 9 March - Horoeka Scenic Reserve Family Day
- Wednesday 12 March - PTSG Pizza Fundraiser
- Thursday 13 March - PTSG 6:30pm
- Friday 28 March - Camp Fundraiser **Colour Run**
- Friday 11 April - **Last day of Term**

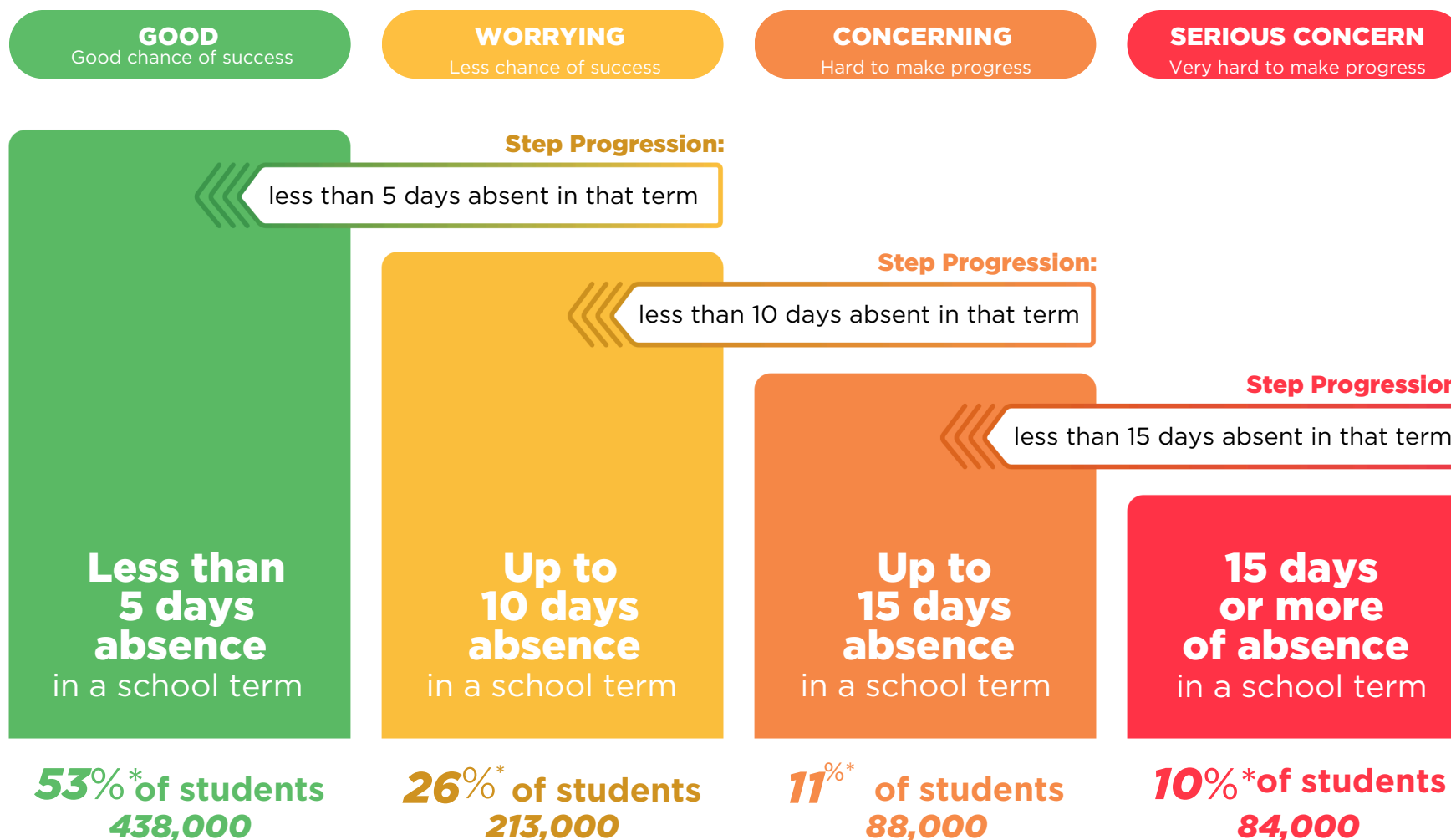
Term 2

- Monday 28 April - Beginning term 2.
- Friday 30 May - Teacher Only Day

Stepped Attendance Response -STAR

Responding to all absences

The Government's target is for **80%** of students to attend regularly, that is to attend school more than **90%** of the time.



* These approximate numbers of students are based on the numbers of students in the regular attendance categories in Term 2 2024.

Stepped Attendance Response -STAR

Responding to all absences

The Stepped Attendance Response (STAR) sets expectations for school, student, parent/guardian, Ministry of Education and broader system responses to student absence.

It provides a series of activities that should be considered when students meet absence thresholds. The actions taken will be tailored to the reasons for absence, for example a student with a chronic illness will require tailored supports for their education. The activities include considering prosecution for absences if appropriate support is offered and not taken up.

Day-to-day operations

Schools:

- Assess attendance history of new students and share attendance history when students move between schools.
- Survey students and parents to support effective teaching practice and engagement
- School Leadership and Boards actively minimise disruptions to the school day and week e.g. use callback days, parent teacher meetings held after school
- Support students to continue learning if unable to attend school every day, including using Ministry approved well-being or transitional plans, or health schools where appropriate.

Ministry of Education:

- Convene termly meetings for leaders from local schools and relevant agencies to discuss students with serious attendance concerns where a multi-agency response is required
- Prepares templated materials for schools to adapt and use to promote or respond to attendance
- Provide attendance data reports for individual schools and Kāhui Ako
- Provide schools with a regularly updated list of agencies that schools can work with to support students
- Contract supports and services that are effective at returning students to regular attendance (e.g. Attendance Service)

Less than 5 days absence in a school term

PARENTS/GUARDIANS

- Ensure student attends every day they are able
- Reinforce good attendance habits
- Support other parents to reinforce good attendance habits
- Open communication with school
- Follow school attendance management plan and associated policies and processes

SCHOOLS

- Clear communication to parents on attendance expectations on enrolment, at the start of school year, and each term
- Communicate to parents what steps the school will take in the event their child is absent from school
- Communicate good attendance habits to students and parents
- Monitor attendance
- Communicate to parents about every absence
- Maintain contact details of parents
- Provide students with regular updates on their own attendance
- Report regularly to parents on attendance of their child
- Support students getting to school
- Use school level approaches to promote good social and learning environment

MINISTRY OF EDUCATION

- Monitor that schools have their attendance policy and attendance management plan on website and it is reviewed as required
- Monitor aggregate data and attendance patterns to identify challenges and opportunities at regional and national levels
- Maintain regular contact with schools and support policy development and interventions/supports
- Support schools to be inclusive and safe

53% of students. 438,000

Up to 10 days absence in a school term

PARENTS/GUARDIANS

- Return student to regular attendance
- Contact school to discuss reasons for absence
- Support student to catch up on missed learning
- Engage in supports offered

SCHOOLS

- Send formal notification and contact parent/guardian to discuss reasons for absence
- Support students to catch up missed learning where required
- Use in-school resources as appropriate to remove barriers e.g. counselor, 2nd hand uniform shop, PB4L

MINISTRY OF EDUCATION

- Support school with formal notification where required

26% of students. 213,000

Plus
previous
responses



Stepped Attendance Response – STAR

Responding to all absences

Up to 15 days absence

in a school term

PARENTS/GUARDIANS

- Return student to regular attendance
- Attend meeting at the school to analyse reasons for absence and to collaborate on a support plan
- Implement strategies at home

SCHOOLS

- Send escalated formal notification to parents
- Hold meeting to analyse reasons for absence and to collaborate on a support plan
- Develop and implement a plan tailored to the reasons and circumstances around the child's absence
- Use in-school resources as appropriate to remove barriers and request support from Ministry or other agencies as needed

MINISTRY OF EDUCATION

- Identify schools with a significant proportion of students at amber level and offer additional support
- Facilitate multi-agency response and support school to implement and monitor improvement plan
- Promote resources and services to support schools to return students to regular attendance
- Identify and respond to localised barriers
- Monitor regional interventions
- Facilitate involvement of other agencies.
- Reprioritise regional support resources to where most needed/effective
- Develop new initiatives/policies if needed
- Support parent/guardian and school to resolve conflict if needed

11% of students. 88,000

Plus
previous
responses



15 days or more absence

in a school term

PARENTS/GUARDIANS

- Return student to regular attendance
- Engage in improvement plan
- Participate in regular meetings

SCHOOLS

- Send warning notice and make contact to arrange meeting with parents
- Escalate to multi-agency response
- Participate in multi-agency response
- Implement and monitor improvement plan
- Undertake school-led prosecution, or request Ministry-led prosecution, when considered appropriate if supports are offered and not taken up.
- Unenrol students who will not be returning to school

MINISTRY OF EDUCATION

- Identify schools with a significant proportion of students at red level and offer additional support
- Facilitate multi-agency response and support school to implement and monitor improvement plan
- Provide direct support to parents where required
- Coordinate regional response where required
- Consider system-wide initiatives for high-risk attendance
- Undertake Ministry-led prosecution when considered appropriate if supports are offered and not taken up, when requested by schools
- Work with the Attendance Service to re-enrol students who are not enrolled

10% of students. 84,000

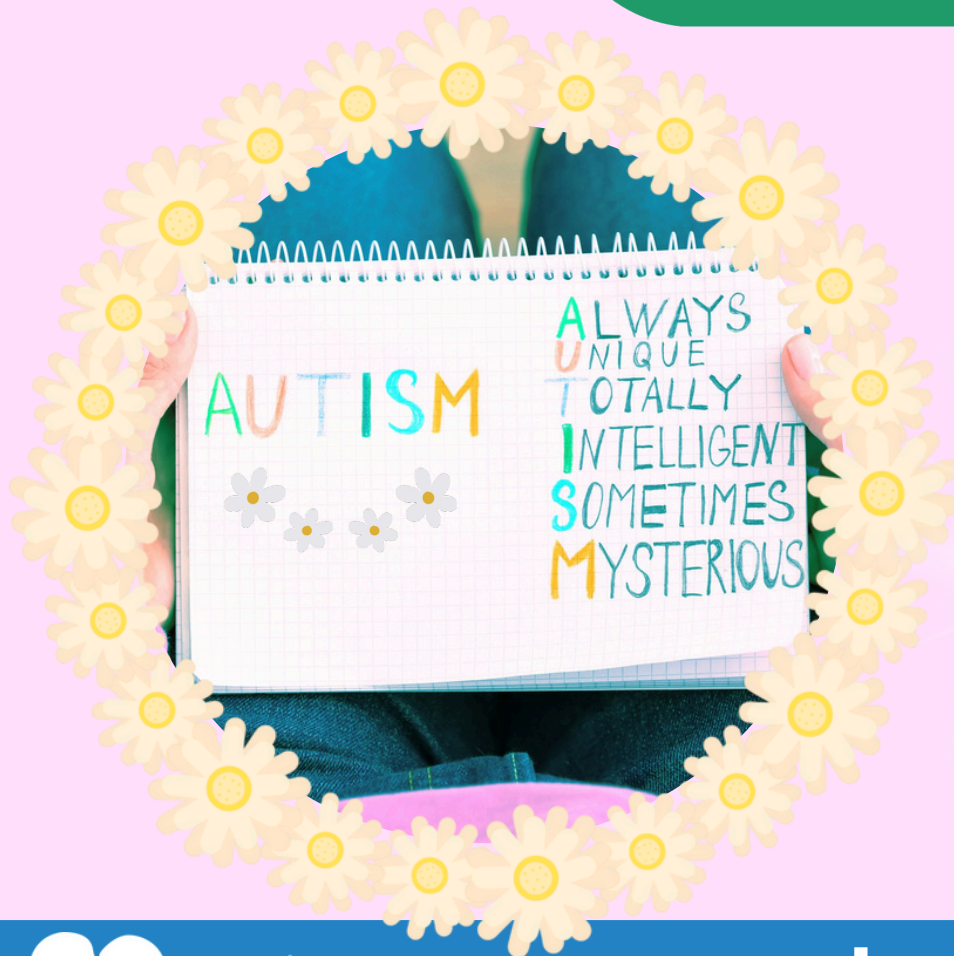
Plus
previous
responses



UHub Invites
You to...

Our 'Empower U' Session

Autism and Girls



Join us for an insightful session on autism, with a focus on how it presents in girls. Discover practical strategies and tips for supporting and nurturing girls on the autism spectrum.

**Book your
spot now!**

Monday 10 March: 1pm - 2pm

Thursday 13 March: 7pm - 8pm

*Venue: Learning Centre,
Upper Hutt City Library*