

TAWHAI SCHOOL (3036)

Enrolment Scheme

The guidelines for development and operation of enrolment schemes are issued under section 11G (3) of the Education Act 1989 for the purpose of describing the basis on which the Secretary's powers in relation to enrolment schemes will be exercised.

Home Zone

All students who live within the home zone described below shall be entitled to enrol at the school.

Start Point: Stokes Valley Entrance at the roundabout of 222 Eastern Hutt Road and 1 Stokes Valley Road southeast bound.

Eastern Hutt Road even address numbers from and including 188 to 236 are in zone.

Stokes Valley Road even address numbers from and including 2 to 110 are in zone.

Only the residential addresses on the following roads and streets continuing off this section of Stokes Valley Road are in zone:

- Clapham Grove
- Greenwich Grove
- Harold Grove
- Holborn Drive from and including 3 to 146, 148, 150, 152, 154 and 156
- Whitechapel Grove

Stokes Valley Road odd address numbers from and including 1 to 127 are in zone.

Only the residential addresses on the following roads and streets continuing off this section of Stokes Valley Road are in zone:

- Castle Crescent
- Glen Road
- James Grove
- John Street
- Kingsley Street
- Lord Street
- Manor Drive
- Mcmanaway Grove
- Mokopuna Grove
- Robson Street
- Takanini Grove
- Thomas Street
- Wagon Road

Only the residential addresses on the following roads and streets continuing off Glen Road are in zone:

- Aratika Grove
- Hawthorn Crescent
- Horoeke Street
- Kereru Grove
- Kopara Grove
- Lowry Crescent
- Lowry Heights
- Maru Street
- Ngahere Street
- Pohue Grove
- Tawhai Street
- Toa Toa Way

Stokes Valley Road odd address numbers from and including 171 to 269 are in zone.

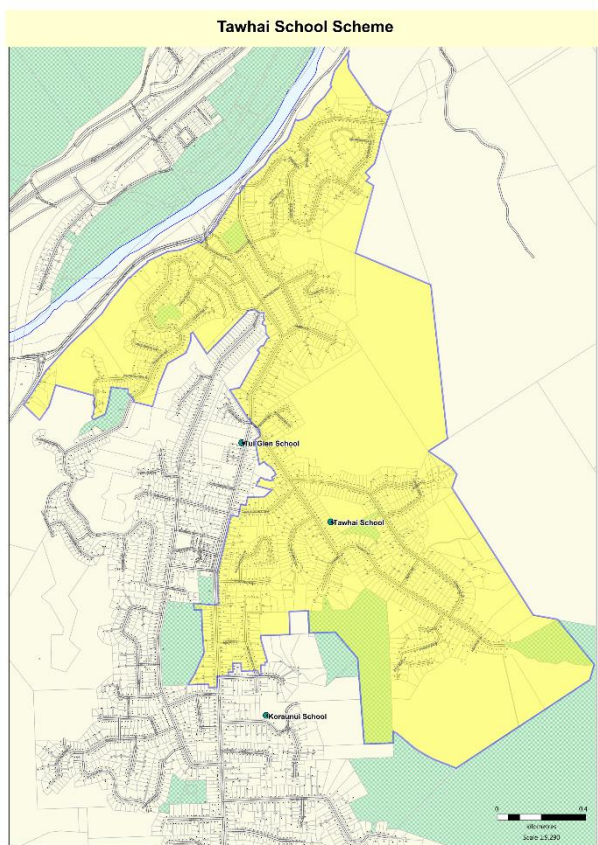
Only the residential addresses on the following roads and streets continuing off this section of Stokes Valley Road are in zone:

- Milton Street
- Montgomery Street from and including 1 to 41
- Morrison Grove
- Speldhurst Gove

Stokes Valley Road even address numbers from and including 236 to 302 are in zone.

**Stokes Valley residential addresses not mentioned in this description of boundaries are out of zone.*

Tawhai School Home Zone



Proof of residence within the home zone will be required.

Special Programmes

This priority category is not applicable at this school because the school does not run a Special programme approved by the Secretary.

Out of Zone Enrolments

Each year the Board will determine the number of places which are likely to be available in the following year for the enrolment of students who live outside the home zone. The board will publish this information by notice in a daily or community newspaper circulating in the area served by the school and on the school website. The notice will indicate how applications are to be made and specify a date by which all applications must be received. The notice may indicate how many places are available.

Applications for enrolment will be processed in the following order of priority:

First Priority	This priority category is not applicable at this school because the school does not run a special programme approved by the Secretary.
Second Priority	Will be given to applicants who are siblings of current students.
Third Priority	Will be given to applicants who are siblings of former students.
Fourth priority	Will be given to applicants who are children of former students.
Fifth priority	Will be given to applicants who are either a child of an employee of the board of the school or a child of a member of the board of the school.
Sixth priority	Will be given to all other applicants.

If there are more applicants in the second, third, fourth, fifth or sixth priority groups than there are places available, selection within the priority group will be by a ballot conducted in accordance with instructions issued by the Secretary under Section 11G(1) of the Education Act 1989.

Parents will be informed of the date of any ballot by notice in a daily or community newspaper circulating in the area served by the school.

Applicants seeking second or third priority status may be required to give proof of a sibling relationship.